



Supplementary Materials

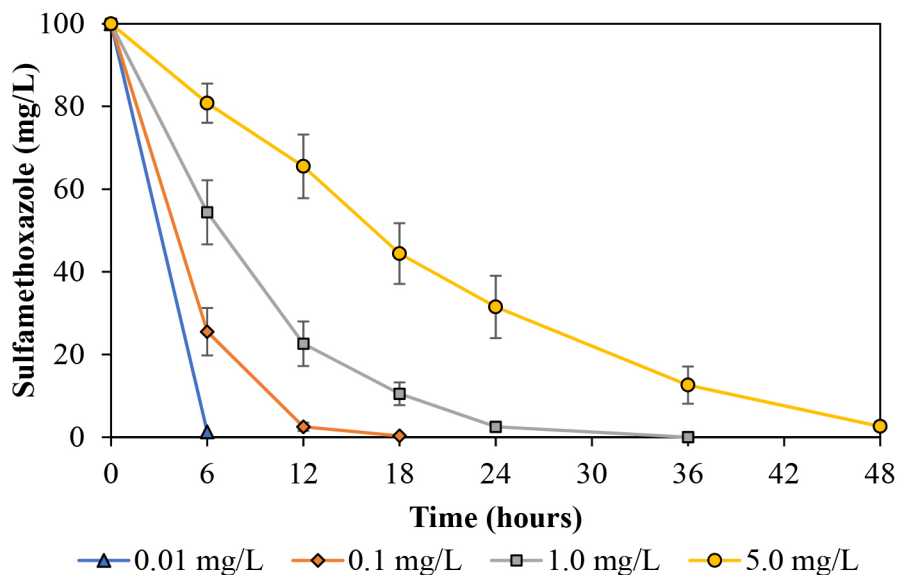


Fig. S1. Sulfamethoxazole utilization at 0.01–5.0 mg/L as a sole carbon and nitrogen source.

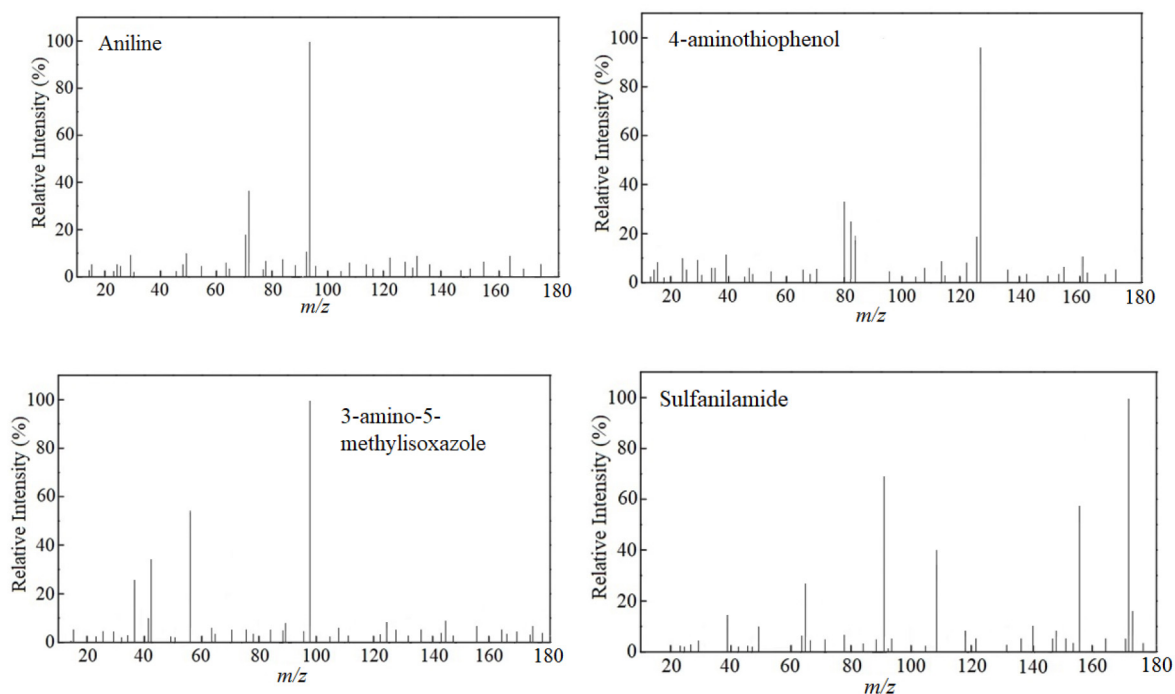


Fig. S2. GC/MS of some intermediates in degradation of sulfamethoxazole by the mixed culture of *Acinetobacter* sp. S1 and *Pseudomonas* sp. S2.